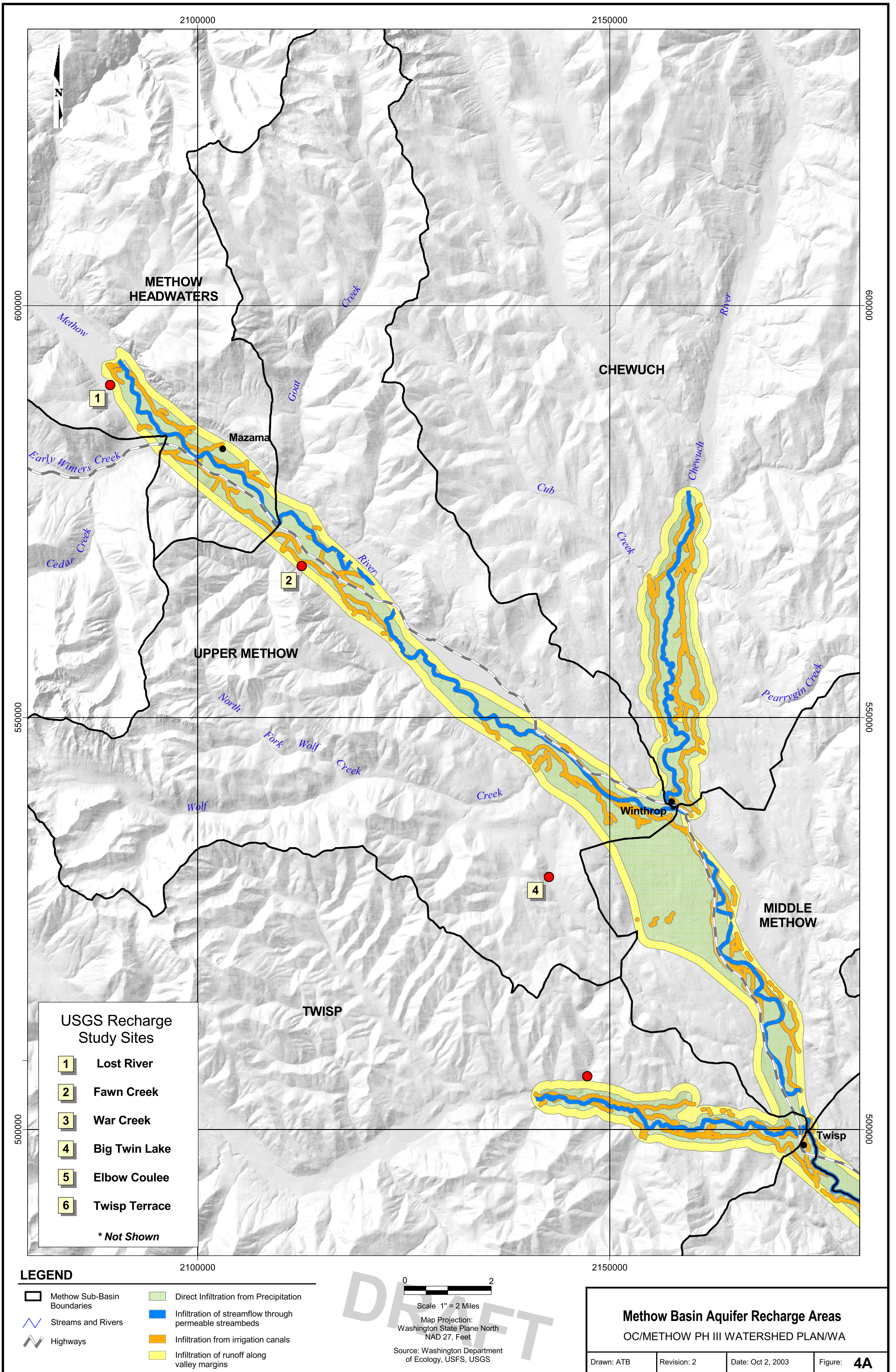


## 7 Attachments

- Methow Basin Aquifer Recharge Areas, Figure 4A and 4B
- Methow Watershed Council. WRIA 48 Watershed Planning Information for the Okanogan County Planning Commission, July 9, 2013.
- Methow Watershed Council Letter to Okanogan County Commission, June 14, 2011 letter



**USGS Recharge Study Sites**

1	Lost River
2	Fawn Creek
3	War Creek
4	Big Twin Lake
5	Elbow Coulee
6	Twisp Terrace
* Not Shown	

**LEGEND**

Methow Sub-Basin Boundaries	Direct Infiltration from Precipitation
Streams and Rivers	Infiltration of streamflow through permeable streambeds
Highways	Infiltration from irrigation canals
	Infiltration of runoff along valley margins

0 2  
 Scale 1" = 2 Miles  
 Map Projection:  
 Washington State Plane North  
 NAD 27, Feet  
 Source: Washington Department  
 of Ecology, USFS, USGS

**Methow Basin Aquifer Recharge Areas**  
 OC/METHOW PH III WATERSHED PLAN/WA

Drawn: ATB	Revision: 2	Date: Oct 2, 2003	Figure: <b>4A</b>
------------	-------------	-------------------	-------------------

